



## Clear Response<sup>™</sup> Comprehensive detoxification formula in powdered form<sup>♦</sup>

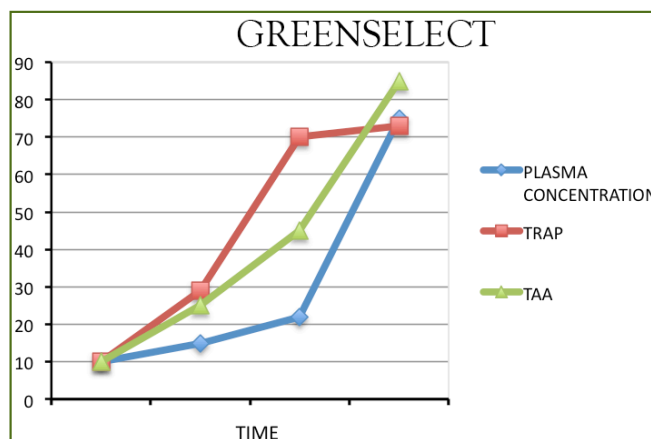
- Comprehensive formula with excellent taste profile<sup>♦</sup>
- Vitamins, minerals, amino acids and botanicals to support phase I and II detoxification<sup>♦</sup>
- Clinically proven Greenselect Phytosome<sup>™</sup><sup>♦</sup>

44015 - 567 G

This exceptionally gentle cleanse formulation is designed specifically to promote your body's innate ability to purify itself through the use of botanicals, extracts and a detoxification-specific amino acid combination. Each component was included for its known supportive action(s) both within the gastrointestinal system and on phase I and phase II detoxification of the liver. Greenselect Phytosome<sup>™</sup>, the gold standard of green tea extracts, demonstrates superior absorption

### Maximum Antioxidant Activity:

Data from a study of 24 healthy females ingesting Greenselect Phytosome<sup>™</sup> over a six week period found the Greenselect<sup>®</sup> group experienced significant increases in the total antioxidant activity (TAA), plasma concentration and radical antioxidant parameter (TRAP) compared to control subjects.



Erba D., Riso P., Bordon A., Foti P., Biagi P.L., Testolin G. Effectiveness of moderate green tea consumption on antioxidant status and plasma lipid profile in humans. J. Nutrit. Biochem. 16, 144-149 (2005).



Clear Response<sup>™</sup>

♦ These statements have not been evaluated by the Food and Drug Administration.  
This product is not intended to diagnose, treat, cure or prevent any disease.



## A look At The Key Ingredients:

- **Yellow Pea Protein:** 19 g
- **Greenselect Phytosome™:** 160 mg
- **Glycine:** 1000 mg- Supports Phase II Detoxification♦
- **Glycine:** L-Glutamine - Supports a healthy gastrointestinal tract♦
- **Broad Spectrum Digestive Enzyme Formula**

### Supplement Facts

Serving Size 27 grams (1 scoop)

Amount per Serving	% Daily Value		Amount per Serving	% Daily Value		Amount per Serving	% Daily Value
Calories	100	5%*	Vitamin B12 (as methylcobalamin)	25 mcg	417	Bromelain (from Ananas comosus) (std to 80 GDU/g)	100 mg **
Calories from Fat	15	1%*	Biotin	150 mcg	50	L-Taurine	100 mg **
Total Fat	1.5 g	2%*	Pantothenic acid (as d-calcium pantothenate)	20 mg	200	MSM (Methyl Sulfonyl Methane)	100 mg **
Saturated Fat	0 g	0%*	Calcium (as calcium citrate malate)	200 mg	20	Quercetin	100 mg **
Trans Fat	0 g	**	Iodine (as potassium iodide)	50 mcg	33	Organic Turmeric (root) Powder ( <i>Curcuma longa</i> )	100 mg **
Sodium	273 mg	11%*	Magnesium (as magnesium citrate malate)	200 mg	50	Dandelion (root) Powder ( <i>Taraxacum officinale</i> )	50 mg **
Total Carbohydrate	2 g	0.7%*	Zinc (as zinc glycinate)	10 mg	67	Organic Broccoli Powder ( <i>Brassica oleracea</i> )	50 mg **
Dietary Fiber	2 g	8%*	Selenium (as L-selenomethionine)	100 mcg	143	Organic Cinnamon	15 mg **
Sugars	0 g	**	Manganese (as manganese glycinate)	0.5 mg	25		
Protein	15 g	30%*	Chromium (as chromium glycinate)	50 mcg	42	<b>Digestive Enzyme Blend</b>	
Potassium	60 mg	1.7%*	Molybdenum (as molybdenum glycinate)	25 mcg	33	Amylase	925.0 DU **
Vitamin C (as calcium ascorbate)	300 mg	500	Pea Protein Powder	19 g	**	Invertase	125.0 SU **
Vitamin D (as cholecalciferol)	500 IU	125	Glycine	1000 mg	**	Protease	1250.0 HUT **
Vitamin E (as mixed tocopherols)	50 IU	167	L-Glutamine	500 mg	**	Lipase	100.0 FIP **
Thiamine (vitamin B1 as thiamine HCL)	2.0 mg	133	L-Lysine	500 mg	**	Cellulase	315.0 CU **
Riboflavin (vitamin B2 as 5-phosphate)	2.0 mg	118	L-Threonine	200 mg	**	Pectinase	10.0 PG **
Niacin (as niacinamide)	10 mg	50	Nettle (leaf) Powder ( <i>Urtica dioica</i> )	200 mg	**	Glucosylase	2.5 AGU **
Vitamin B6 (as pyridoxal 5-phosphate)	4 mg	200	Green Select® Phytosome™ (Green Tea)††	160 mg	**		
Folate (as 5-methyl tetrahydrofolate)	100 mcg	25	Milk Thistle (seed) Powder ( <i>Silybum marianum</i> )	150 mg	**		

Other Ingredients: Natural Flavors, Stevia.

†† GreenSelect® Phytosome™ is a trademark of Indena S.P.A.

## Place your order now!

ITEM#	PRODUCT	SIZE	RETAIL	QTY	TOTAL
LIVER SUPPORT					
44015	Clear Response™	567G	66.95		

For more information,  
please call 888.309.5222  
[www.anovhealth.com](http://www.anovhealth.com)



♦ These statements have not been evaluated by the Food and Drug Administration.  
This product is not intended to diagnose, treat, cure or prevent any disease.